

PENTAX®

DSmobile 600

Using your DSmobile 600 Scanner with Mac OS X

Pentax provides a TWAIN driver for the DSmobile 600 scanner which allows you to scan from any TWAIN-compliant application, such as Adobe PhotoShop or Microsoft Word. This TWAIN driver may be downloaded from the Pentax website.

The TWAIN driver includes both a low-level scanner data acquisition layer, as well as a custom Graphical User Interface (GUI) that allows you to access advanced scanner features such as Calibration. Access to the GUI, however, is dependent on your software application, since some applications will choose to use their own GUI instead. If your chosen application does not provide access to the TWAIN GUI, you must use another TWAIN application to calibrate your scanner.

Macintosh OS X provides a built-in application called “Image Capture” which works well, with the following exceptions:

- It may be difficult to figure out how to use it to calibrate your scanner without these instructions.
- Displays of scanned images can be misleading about the scanner’s Image Quality. This is due to the way “Image Capture” or the associated “Preview” application displays scanned images. The images displayed typically are not representative of the actual image quality of the scan.

Regarding Image Quality, these helpful hints show you how to verify the quality of your scanned images with the “Preview” application, after you have performed the calibration.

- If you are scanning to JPEF, TIFF, or PNG format, a color graphic image will typically appear on your computer screen as though it has strange artifacts in the image. Use the “Zoom In” feature several times to make these artifacts disappear.
- Alternatively, from the “View” menu, choose “Actual Size”. This will show the image using all the dots that the scanner acquired.
- If you are scanning to PDF format, the “Preview” application seems to be able to “scale” the image to the display window without producing any of these strange artifacts. So, the image quality will be immediately representative of the actual scan.

Calibrating your DSmobile 600 Scanner using “Image Capture”

Calibration is a critical step in setting up your scanner. It allows the scanned color data to be “calibrated” to your computer and scanner combination for best image quality. If at any time you switch the computer that you use with your scanner or change scanners, you will need to calibrate again.

The following steps guide you through calibration of your DSmobile 600 scanner using the built-in “Image Capture” software on your Mac OS X along with the Pentax driver and GUI. Note that once a calibration is performed, it does not need to be re-done if you use to another application on the same computer.

Image Capture for OS X 10.5 (Leopard)

1. Install the DSmobile 600 scanner driver and restart your computer.
2. Connect the scanner to your computer's USB port.
3. Open the Applications folder and run "Image Capture" (See Figure 1).

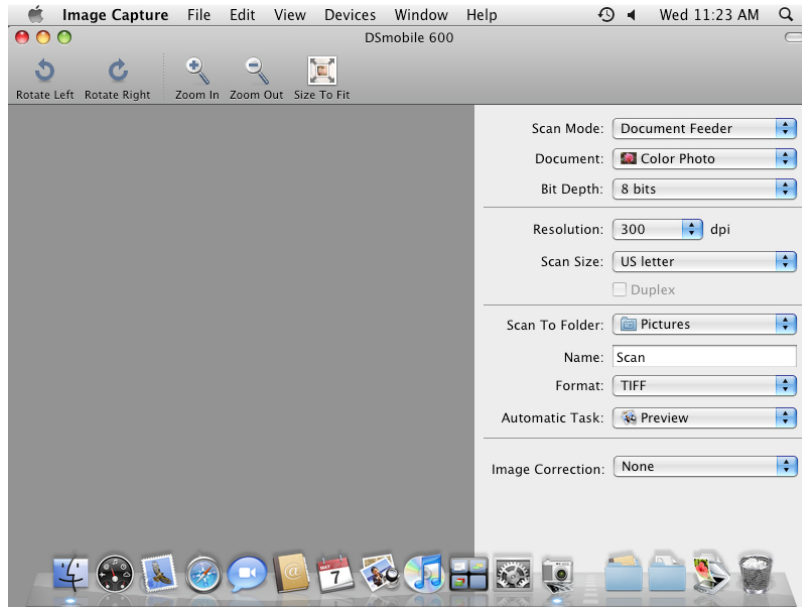


Figure 1. Leopard Image Capture Window

4. Close the "DSmobile 600" window.
5. From the "Devices" menu, choose "Browse Devices" (See Figure 2).



Figure 2. Leopard Device Selection Window

6. The "Image Capture Device Browser" window will appear (See Figure 3).

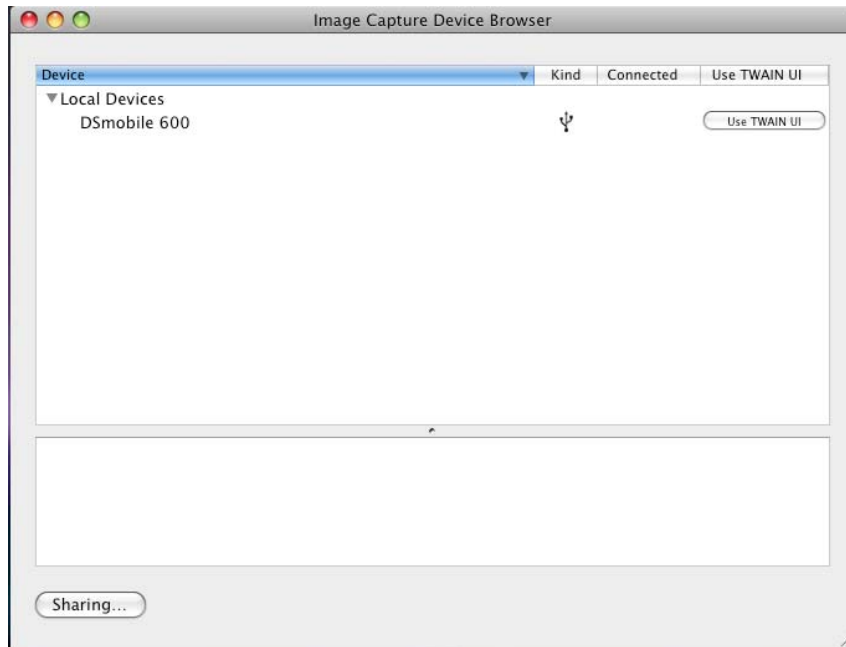


Figure 3. Leopard Image Capture Device Browser Window

7. Click the “Use TWAIN UI” button to the right of “DSmobile 600” (See Figure 3).
8. Click the “Scan” button (See Figure 4).

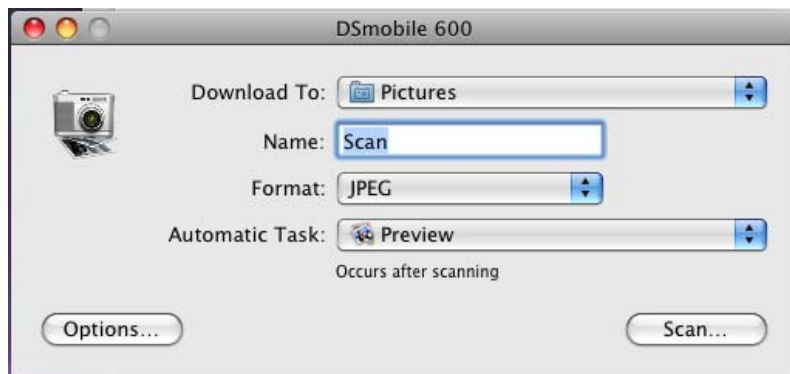


Figure 4. TWAIN Interface Window

9. Click the “Calibrate” button (See Figure 5).

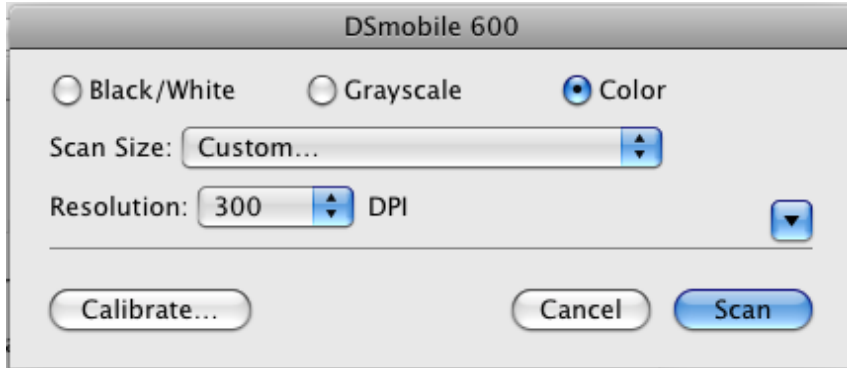


Figure 5. Calibrate Button

10. Click the “Calibrate” button again (See Figure 6).

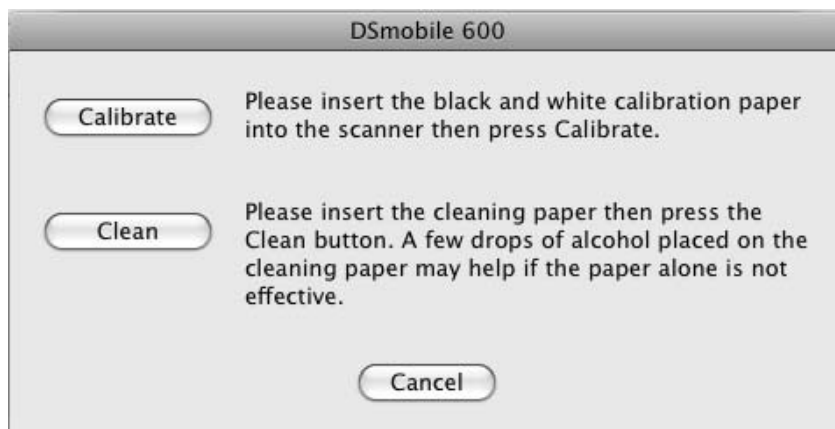


Figure 6. Initiating the Calibration Step

11. Insert the black and white calibration paper (preferred) or a blank sheet of white paper.
12. When the calibration scan is complete, click “OK” and then proceed to scan your documents (See Figure 5).

Image Capture for OS X 10.4 (Tiger)

1. Install the DSmobile 600 scanner driver and restart your computer.
2. Connect the scanner to your computer's USB port.
3. Open the "Applications" folder and run "Image Capture" (See Figure 7).

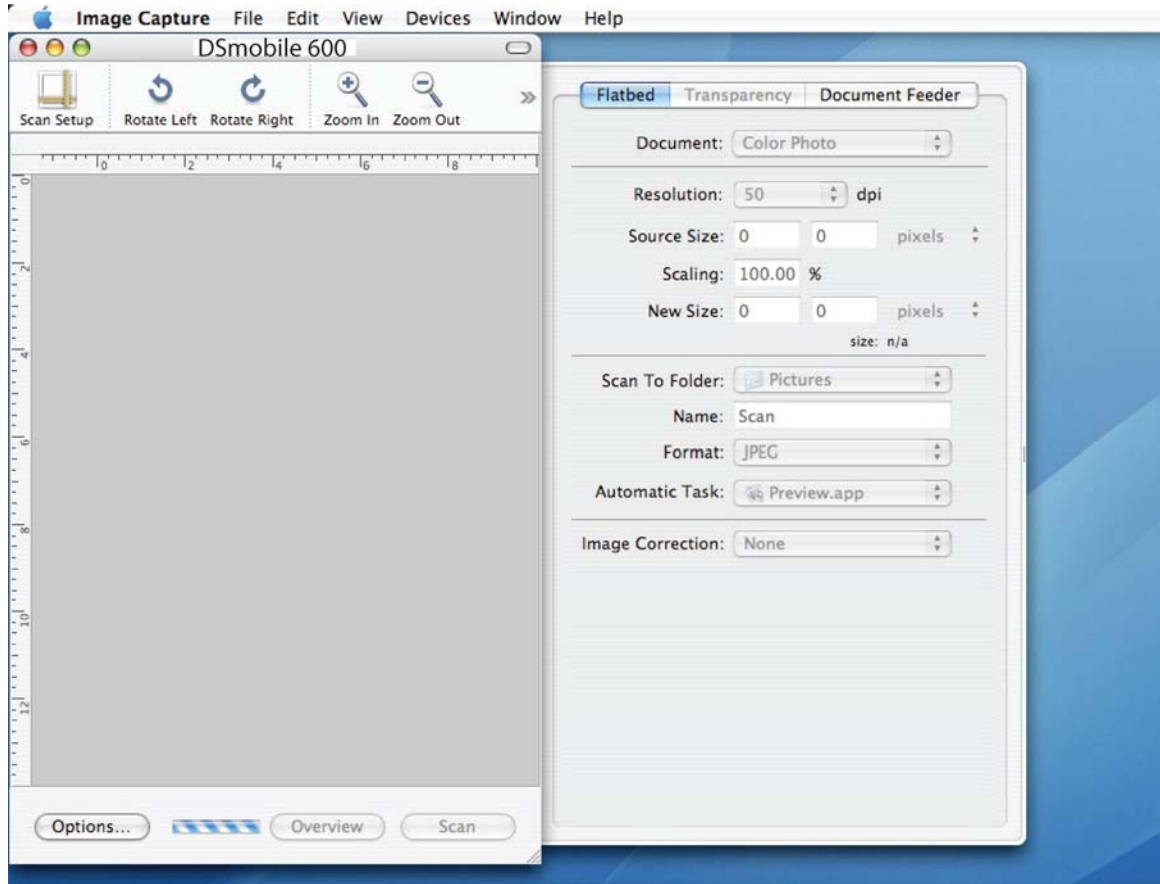


Figure 7. Tiger Image Capture Window

4. Close the "DSmobile 600" window.
5. From the "Devices" window, choose "Browse Devices" (See Figure 8).



Figure 8. Tiger Device Selection Window

6. The “Image Capture Devices” window will appear (See Figure 9).

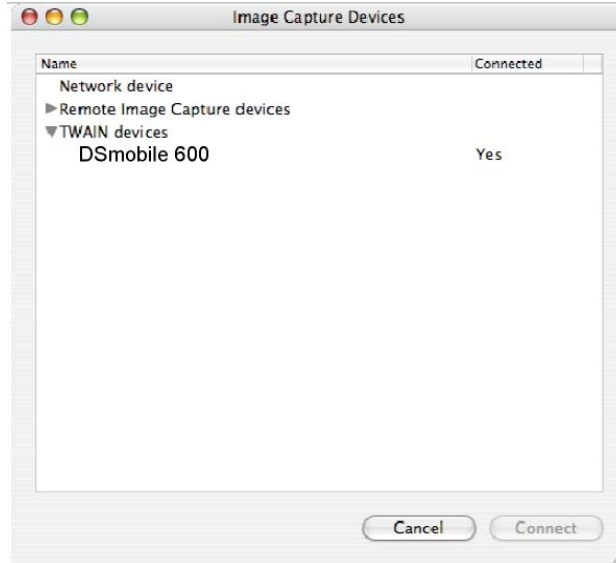


Figure 9. Tiger Image Capture Device Browser Window

7. Click on “DSmobile 600”.
8. Click on the “Use TWAIN software” checkbox at the bottom of the window (See Figure 10).

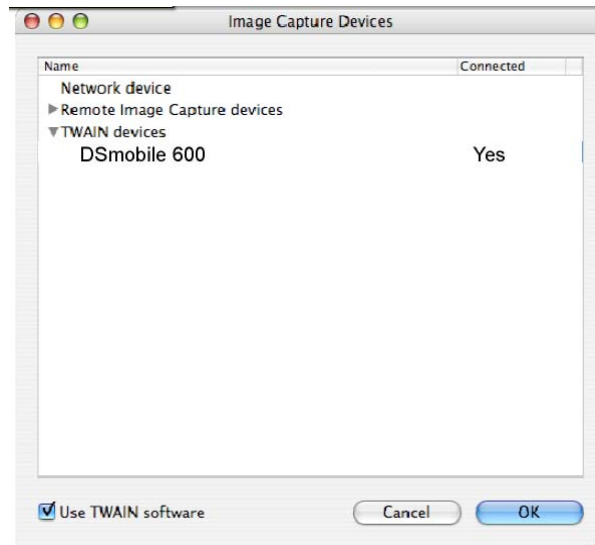


Figure 10. Use TWAIN Software Checkbox

9. Click “OK” in the “Image Capture Devices” window.
10. From the “Devices” menu, choose “DSmobile 600.”
11. In the “DSmobile 600” window, click “Scan.”
12. Click the “Calibrate” button.
13. Insert the black and white calibration paper or blank sheet of paper.

14. When the calibration scan is complete, click “OK” and then proceed to scan your documents.

Image Capture for OS X 10.3 (Panther)

1. Install the DSmobile 600 scanner driver and restart your computer.
2. Open the “Applications” folder and run “Image Capture.”
3. From the “Image Capture”: menu, choose “Preferences.”
4. Click the “Scanner” tab at the top of the window.
5. Click the “Use TWAIN software whenever possible” checkbox.
6. Click “OK” and quit “Image Capture” to save changes.
7. Re-launch “Image Capture.”
8. In the “DSmobile 600” window, click “Scan.”
9. Click the “Calibrate” button.
10. Insert the black and white calibration paper or a blank sheet of paper.
11. When the calibration scan is complete, click “OK” and then proceed to scan your documents.

3122-SCR 5/7/2008

PENTAX Imaging Company
600 12th Street, Suite 300
Golden, CO 80401 USA
Phone: 303-460-1600
Fax: 303-460-1628
Service Phone: 303-460-1820

Pentax Technologies Europe
Weiveldlaan 3-5
1930 Zaventem – Belgium
Phone: +32.2.306.1190
Fax: +32.2.306.1199